



7th December 2018

enquiries@westmere.lincs.sch.uk 01406 350205

Topics for next week

We would like to encourage parents to support their child with their learning at home. Should you want more information, please speak to your child's class teacher after school. Please find below the information for the week commencing 10th December.

| Class | English | Maths |
|-----------|-------------------------|----------------------------|
| China | Sequencing a story. | Weight / measure. |
| Australia | Instructions. | Place value. |
| France | Letter to Santa. | Place value. |
| Italy | Instructions. | Addition. |
| Brazil | Recounts - diary entry. | Multiplication & division. |
| Mexico | Narrative. | Multiplication & division. |
| Canada | Christmas narrative. | Time. |
| USA | Explanations. | Time. |
| Spain | Newspaper reports | Mental calculations. |
| Portugal | - The Christmas Truce. | |
| The Den | Story sequencing. | Multiplication problems. |

Parking on Anne Road

We have been informed by a neighbour of the school that cars are **double parked on the road and in front of the residents' drive ways or drives**. Can we remind you to be considerate to residents who live on Anne Road. Some of the residents are disabled and need carers to visit them throughout the day. We would also like to remind you that if we needed an emergency vehicle at school, they would have great difficulty in getting to us. Thank you.

Friends of Westmere

Thank you for all your support at the Christmas Fayre. A total of £1772.41 was raised.

Christmas Post Box

The Christmas card post box is in the school reception. Please make sure that your child puts full names and classes on the envelopes.



Poppy Appeal

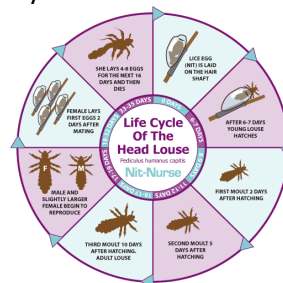
Thank you to all those who donated to the poppy

appeal this year. Our school raised a total of £88.62.



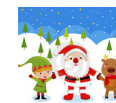
Head Lice

We have had some reports of head lice in school again. Please make sure you check your child regularly and if needed, make sure that they are treated. Thank you.



Rand Farm Park - Lunch with Santa

On Monday 17th December, reception children in China and Australia classes will be visiting Rand Farm Park in Lincoln. They will be having Lunch with Santa in the Winter Wonderland followed by the visit to 'The Living Farm Nativity' where real animals have been used with animated figures to portray the Inn Scene of the Christmas Story. They will then have a quick look at the animated elves in the toyshop before meeting Rudi and Rossi Reindeer who will be waiting outside Santa's Home in the forest. Santa will then give every child a present. We will leave school at 8am and return for approximately 3.15pm. Please make sure that your child is in school for **7.45am**. Please make sure that your child has some drinks with them on the day. **Please do not send Fizzy Drinks**. The actual cost of this trip is £28.00 per child. School have subsidised the cost and would therefore like to ask you for a voluntary contribution of £15 per child.



Class Visits

During class trips, we would like the children to wear their school uniform with the blue PE hoodie instead of their Westmere sweatshirts, unless stated otherwise. Make sure that your child has plenty of drink with them on the trip day. **Do not send Fizzy Drinks**. The Facebook page, 'The Griffin

Federation', will be updated on trip days, with arrival back at school times.

Carol Concert - St Matthew's Church

On Wednesday 19th December, Brazil, Mexico, Canada, USA, Spain and Portugal Classes will be going to St Matthew's Church for a Carol Concert. It will start at 2pm. Parents are very welcome to join us at the church. When the concert is finished, parents can take their child straight home from the church. We ask that you let the class teacher know you have taken your child. Thank you.



Sleeping Beauty Panto - Friday 14th December

On Friday 14th December, the whole school will be going to the Pantomime at King's Lynn Corn Exchange. **We would like all the children to wear their blue PE Hoodie on this day. The gates will be open at 8.30am and will be closed at 8.45am.** We will be leaving school at 8.45am and should return to school at approximately 1.00pm. The children will have their lunch on their return to school. All children will need a packed lunch.



Christmas Plays

China and Australia Classes will be performing 'Our First Nativity' on Tuesday 18th December, at 1.30pm and 6.00pm. France and Italy Classes will be performing 'Away in A Manger' also on Tuesday 18th December, 2.30pm and 6.45pm. If you do not require any of the tickets given to you, please return them to the school office. If you would like more tickets, please come and ask at the office.



St Matthew's Church Christmas Services

On Sunday 16th December, there will be a Carol Service. It will start at 6.30pm.

On Monday 24th December, there will be a Crib Service. It will start at 4pm.

Christmas Lunch

On Thursday 20th December, we will be having our Christmas Lunch. We will be providing a free

Christmas lunch for every child -this will be a non-uniform Christmas jumper day for 'Save the Children'. Please bring along a 50p donation towards this charity.



Clubs

If your child is not attending their after school club, can you please ensure the office is made aware.

There will be no clubs on Monday 10th December, due to staff training. Last day of clubs, for this term, is Friday 14th December.

Swimming Lessons

Mexico Class children will be going swimming in term 3. The first session will be on Monday 7th January 2019 and they will continue swimming each Monday until Monday 11th February 2019. Please make sure that your child has their swimming kit with them every Monday. Girls will need to wear a one piece swimming suit and boys must wear close fitting swimming trunks no longer than mid-thigh in length. We will need to ask for a voluntary contribution of £2.20 per session. Please send this with your child on the days they go for their swimming lesson.



Dates for Diary

- 14th Dec - Pantomime, Sleeping Beauty, King's Lynn
- 17th Dec - Lunch with Santa, Rand Farm Park, Lincoln
- 18th Dec - Christmas Plays
- 19th Dec - Carol Service - St Matthew's Church
- 20th Dec - Christmas Lunch Day - Whole school
- 20th Dec - End of Term 2
- 7th Jan - Start of Term 3

Yours sincerely
Miss K Wiles
Headteacher

Swimming Sessions

Child Name: _____ Class: Mexico
I give permission for my child to attend the swimming lesson on Mondays starting on 7th January to 11th February 2019.



Signed: _____
Parent/Carer

| | | | |
|----------------------------|--|-------------------------------|--|
| PM TO 5.00 | | 4.30 PM TO 5.00 PM | |
| PM | | | |
| 0 PM TO 5.30 PM | | | |